

ubuntu - Podrška #14021

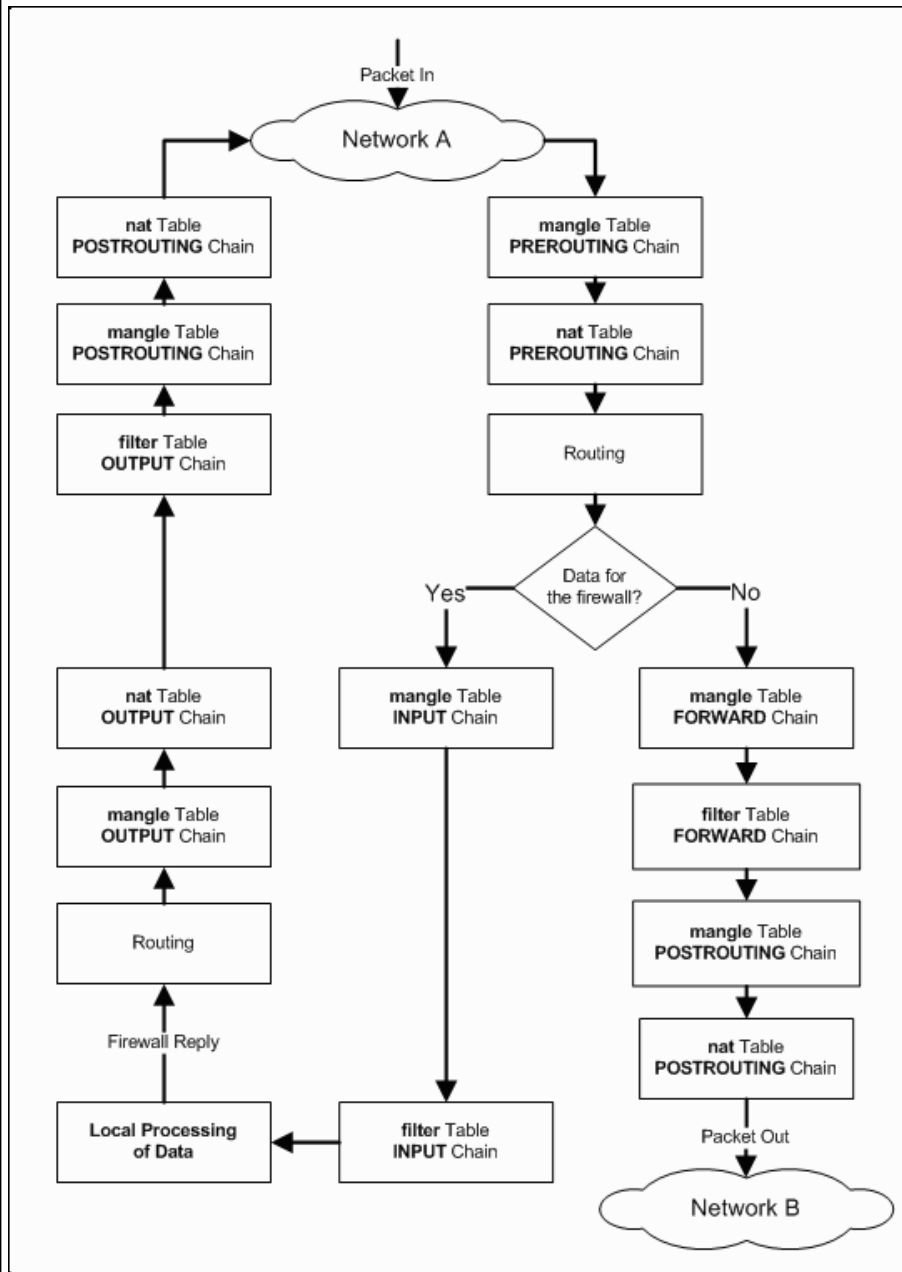
iptables workflow

19.04.2008 18:22 - Ernad Husremović

Status:	Zatvoreno	Početak:	19.04.2008
Prioritet:	Normalan	Završetak:	
Odgovorna osoba:	Ernad Husremović	% završeno:	0%
Kategorija:	iptables	Procjena vremena:	0.00 sat
Ciljna verzija:			

Opis

na jednoj od internet starnica koje sadrže dokumentaciju za iptables našao sam dobar grafički prikaz iptables workflow-a



Historija

#1 - 19.04.2008 18:22 - Ernad Husremović

- Kategorija postavljeno na iptables

- Status promijenjeno iz Novo u Zatvoreno

- Odgovorna osoba postavljeno na Ernad Husremović

#2 - 08.11.2010 15:32 - Ernad Husremović

kako zablokirati neku ip adresu da izlazi na internet

možemo ga presresti u FORWARDING chain-u

ovakvo je stanje kod nas na router-u

```
root@router-4:~# iptables -L FORWARD
```

```
Chain FORWARD (policy ACCEPT)
target     prot opt source                destination
zone_wan_MSSFIX all  -- anywhere             anywhere
ACCEPT     all  -- anywhere             anywhere           state RELATED,ESTABLISHED
forwarding_rule all  -- anywhere             anywhere
forward     all  -- anywhere             anywhere
           all  -- anywhere             anywhere
```

```
root@router-4:~# iptables -L forwarding_rule
```

```
Chain forwarding_rule (1 references)
target     prot opt source                destination
```

```
root@router-4:~# iptables -A forwarding_rule -s 192.168.45.171 -j DROP
```

nakon toga imamo

```
root@router-4:~# iptables -L forwarding_rule
```

```
Chain forwarding_rule (1 references)
target     prot opt source                destination
DROP       all  -- 192.168.45.171       anywhere
```

testiramo ping i fakat saobraćaj sa te radne stanice ne prolazi. Sa drugih imamo prolaz.

#3 - 08.11.2010 15:34 - Ernad Husremović

ako ga izbrišemo

```
root@router-4:~# iptables -D forwarding_rule -s 192.168.45.171 -j DROP
```

ping ponovo radi.

Zaključak: u **forwarding** chain-u (provjeriti na router-u kako je FORWARD chain podešen pa tu stavite DROP) dodajte drop pravilo.

Fajlovi

iptables.gif	21,7 KB	19.04.2008	Ernad Husremović
--------------	---------	------------	------------------